



THE ALCONA

ELITE

COLLECTION

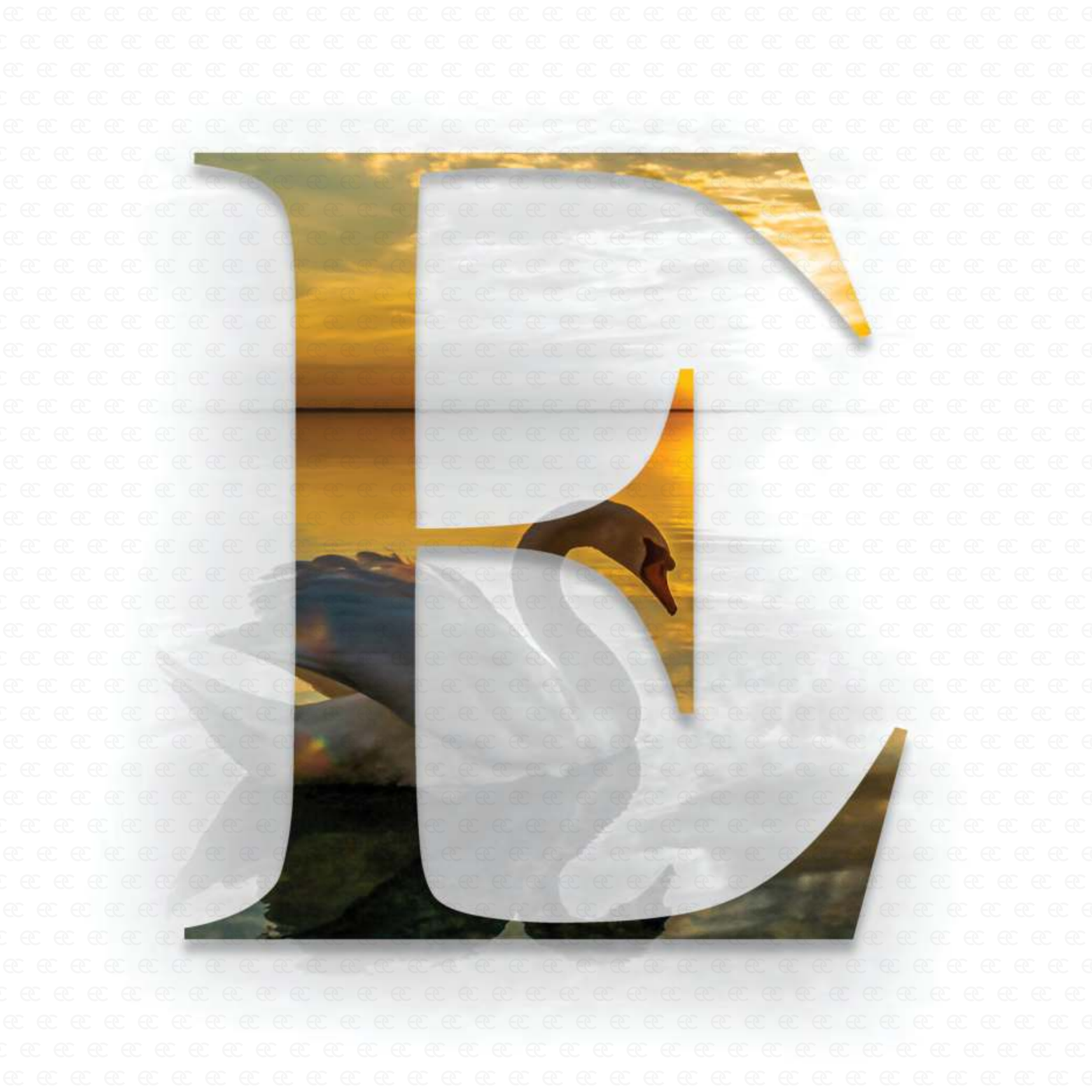


THE ELITE COLLECTION OF 40' EXECUTIVE HOMES

---

EXCEPTIONAL LEGENDARY INSPIRING TIMELESS EXQUISITE





EXCEPTIONAL



**LINING THE SHORES OF LAKE SIMCOE  
INNISFIL IS A SECRET WORTH SHARING**

A peaceful escape just above the GTA, this charming hamlet features unbridled waterside vistas and lush public parkland. The perfect community for families to live, work, play and aspire to new heights.



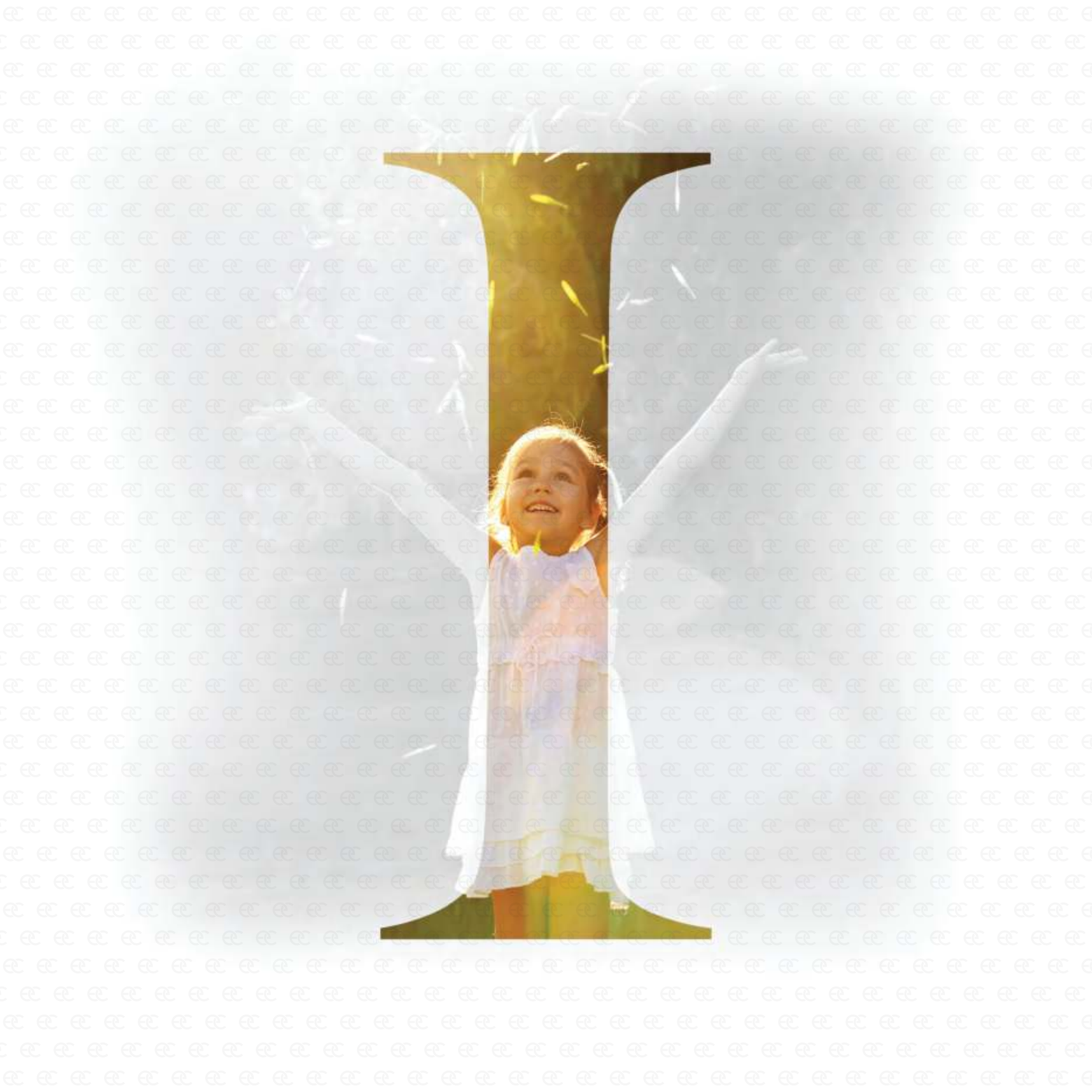
# LEGENDARY



## INTRODUCING THE ELITE COLLECTION BY COUNTRY HOMES

A limited enclave of homes perfectly located in Innisfil that establishes a new horizon for modern design and impeccable craftsmanship. Dream higher with ten-foot ceilings. Live bigger with finished basements. Arrive home in style. Make an impression.





## INSPIRING

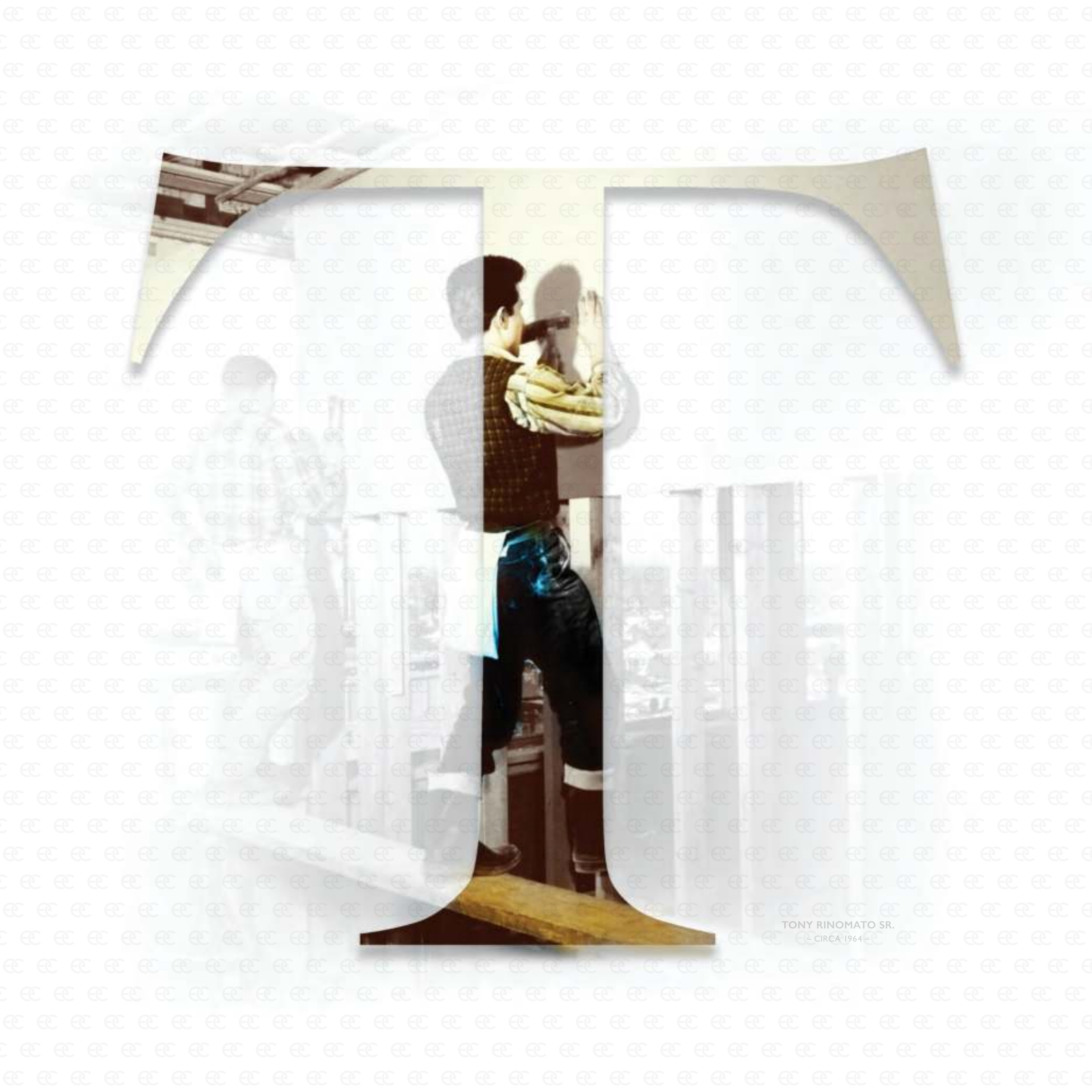


**IMAGINE WAKING ON A SATURDAY MORNING WITH  
A WORLD OF OPPORTUNITY AT YOUR DOORSTEP**

Take a stroll down to the Lake Simcoe shoreline, or visit a local park.  
Shop for the latest fashions at nearby Tanger Mall. Or simply savour  
the day and relax at home in Alcona by the lake.



# TIMELESS



OVER FIFTY YEARS STRONG



Everything we do takes our future homeowners into consideration first. For over fifty years, Country Homes has built from the heart, blending high-quality design and old-world craftsmanship with timeless elegance. With a customer-centric approach, the company is known for crafting welcoming family homes built with pride, with each homeowner in mind.

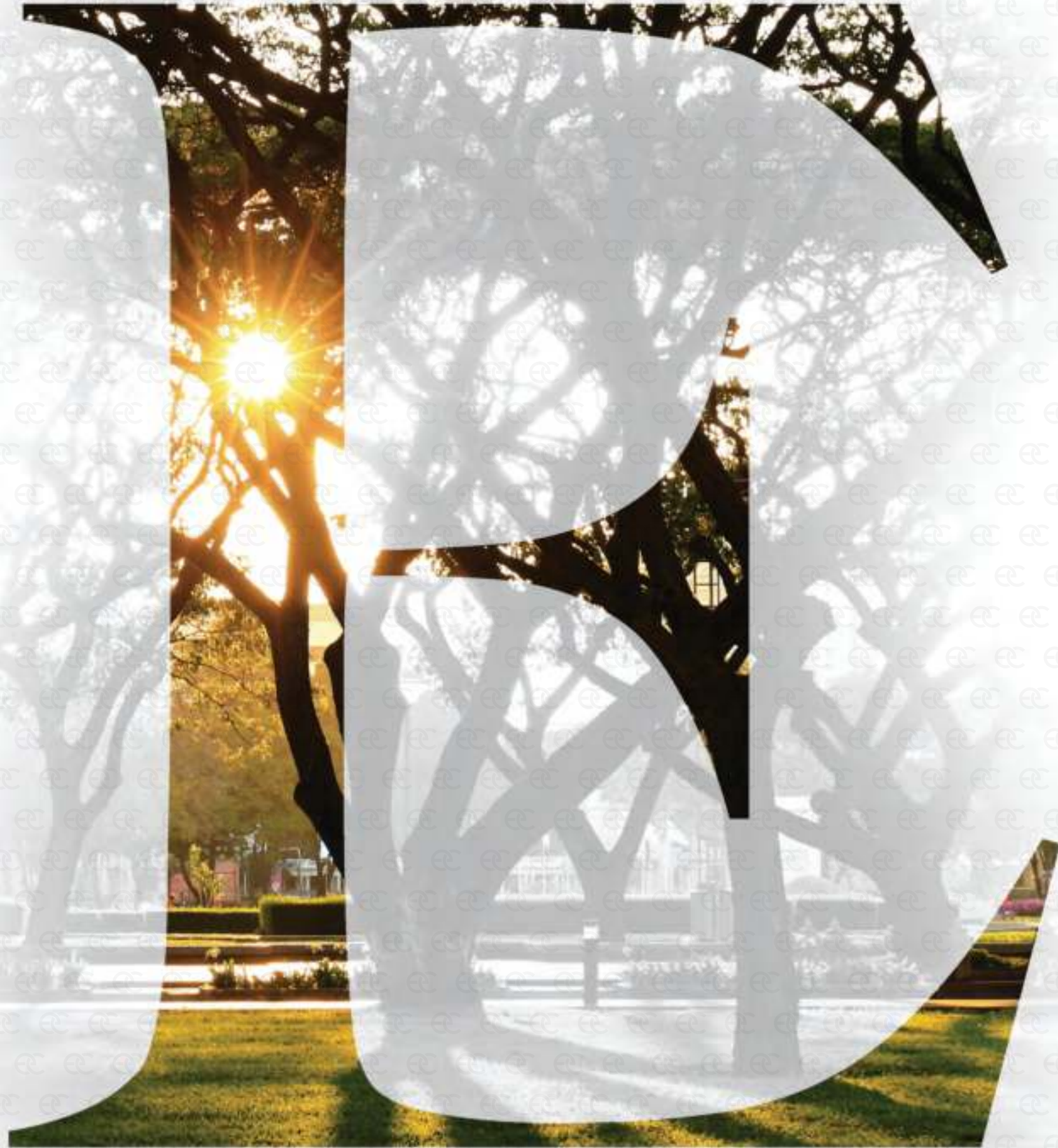
YOUR SATISFACTION IS OUR REWARD



Country Homes is honoured to have been selected as the award winner of three prestigious H.O.M.E. Awards™: **Best Customer Experience**, **Builder of Choice** and **Industry Ambassador of the Year**. Selected from homebuilders across Canada, these awards symbolize our ongoing commitment to total homeowner comfort, satisfaction and peace of mind.

TONY RINOMATO SR.  
CIRCA 1964





## EXQUISITE



FOR THE ELITE COLLECTION, COUNTRY HOMES  
RAISES THE BAR FOR FINE LIVING IN INNISFIL

– ELITE FINISHES –

Ten-foot ceilings • Finished basements • Granite countertops  
Electric garage door openers • Electric car rough-in • Freestanding tubs  
Eight-foot front entry door • Smooth ceilings throughout • Stained oak stairs





THE ALCONA  
**ELITE**  
COLLECTION



ALCONA  
SALES OFFICE

INNISFIL BEACH ROAD

INNISFIL BEACH PARK

LAKE SIMCOE





THE ELITE COLLECTION OF 40' EXECUTIVE HOMES



THE  
EXCEPTIONAL  
ELEVATION

A



— 3 5 7 3 S Q . F T . —  
(INCLUDES 897 SQ. FT. FIN. BSMT)

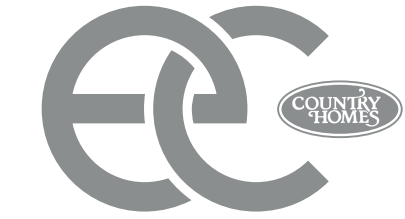
THE  
EXCEPTIONAL  
ELEVATION

B



— 3 5 9 7 S Q . F T . —  
(INCLUDES 897 SQ. FT. FIN. BSMT)





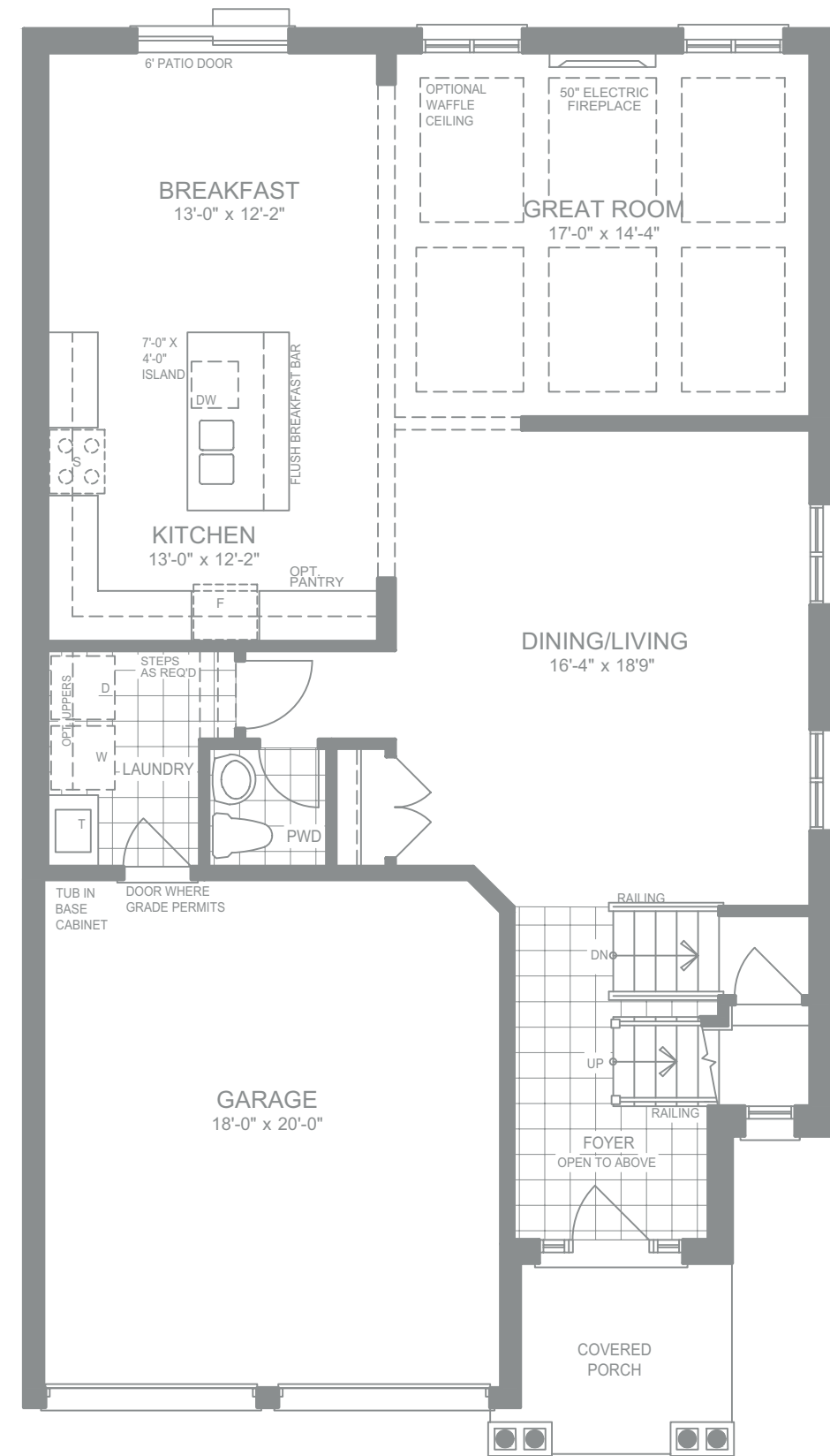
EXCEPTIONAL



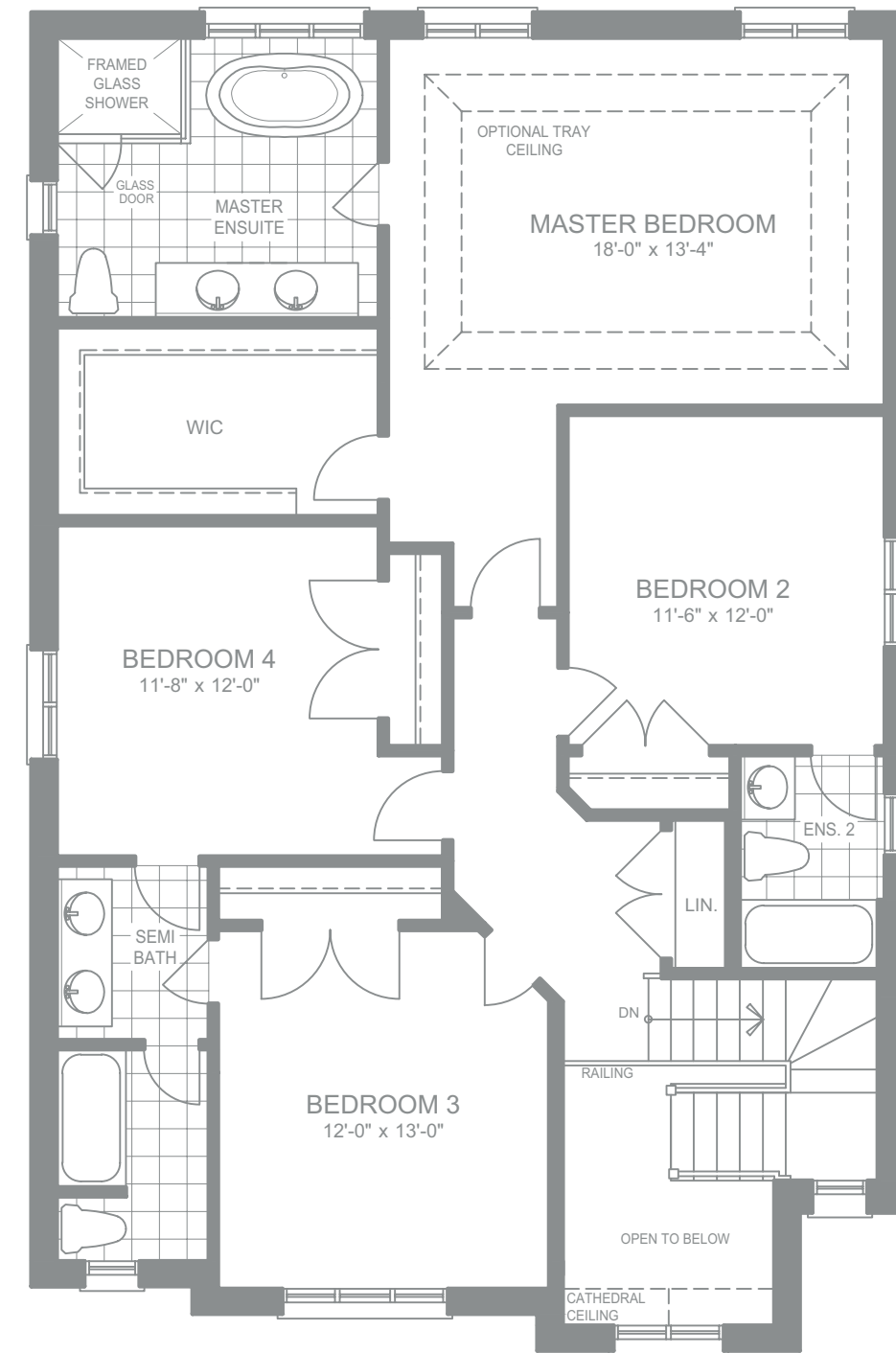
ELEVATION A  
 - 3573 SQ.FT. -  
 (INCLUDES 897 SQ.SF. FIN. BSMT)



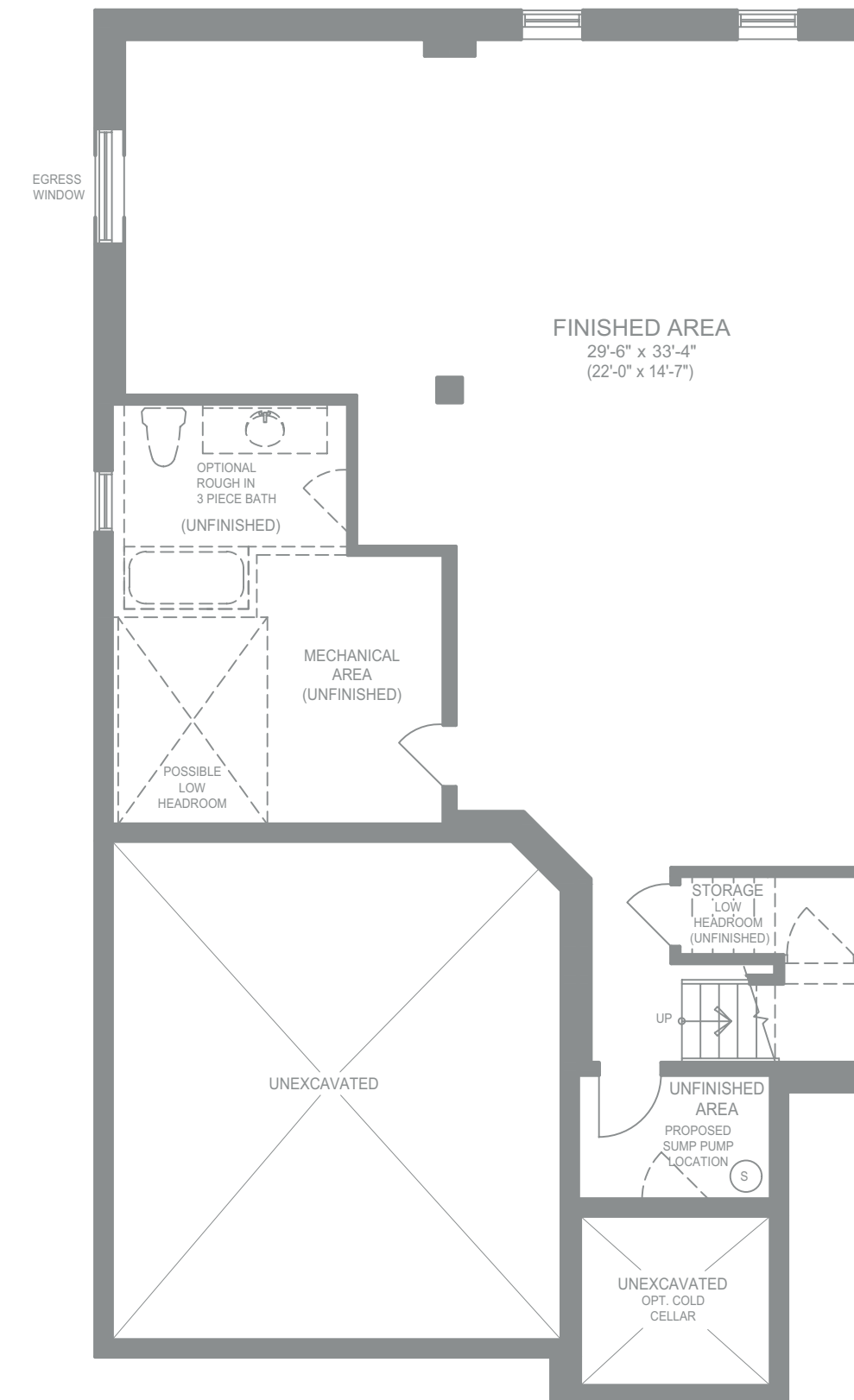
ELEVATION B  
 - 3597 SQ.FT. -  
 (INCLUDES 897 SQ.SF. FIN. BSMT)



MAIN FLOOR PLAN  
 ELEV. - A



SECOND FLOOR PLAN  
 ELEV. - A



FINISHED BASEMENT  
 ELEV. - A & B



THE  
**LEGENDARY**  
ELEVATION

A



— 3947 SQ. FT. —  
(INCLUDES 1024 SQ. FT. FIN. BSMT)

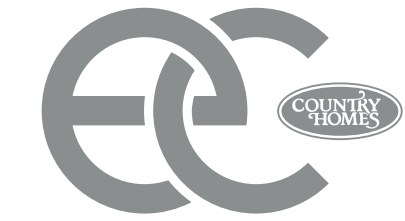
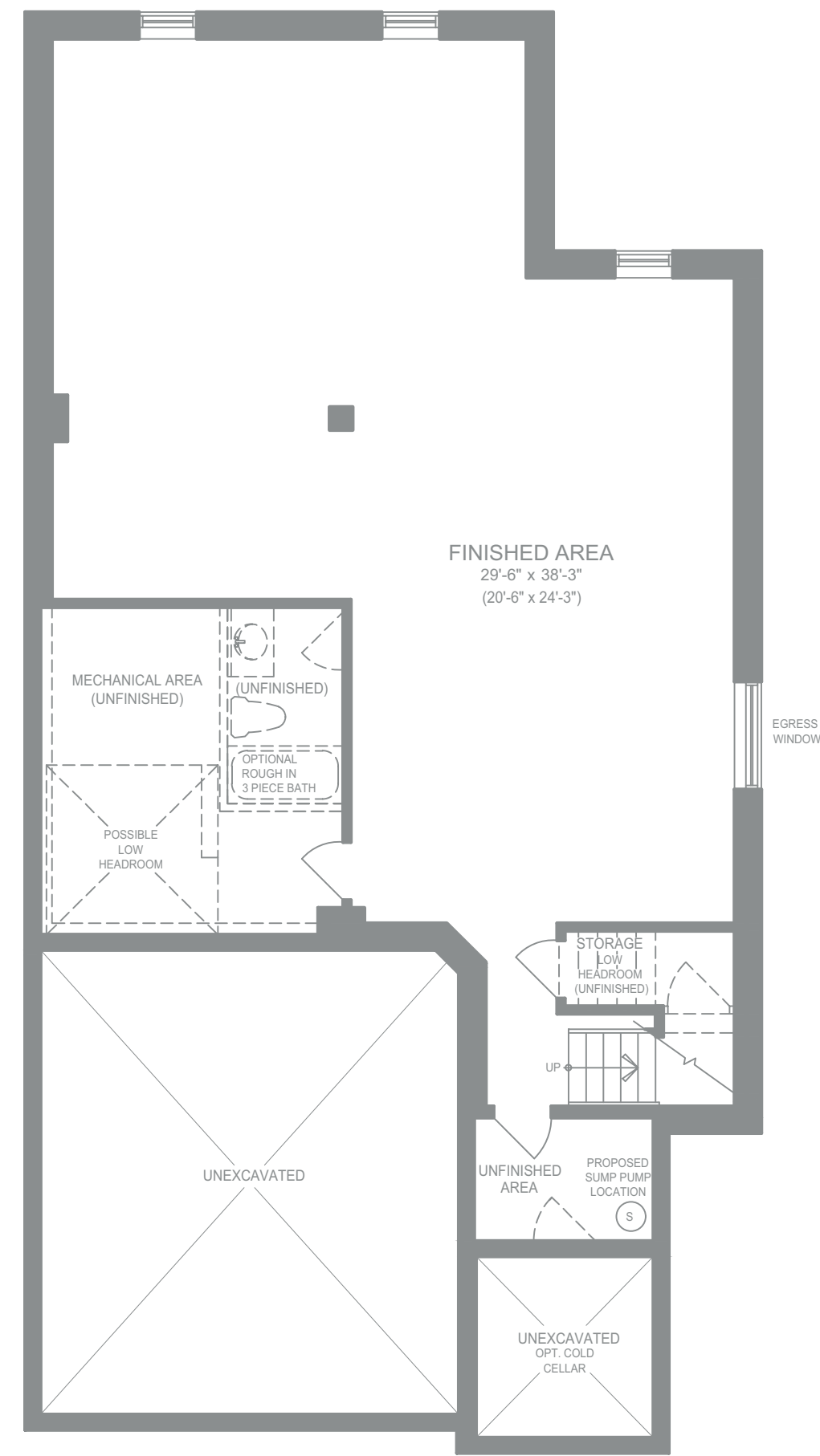
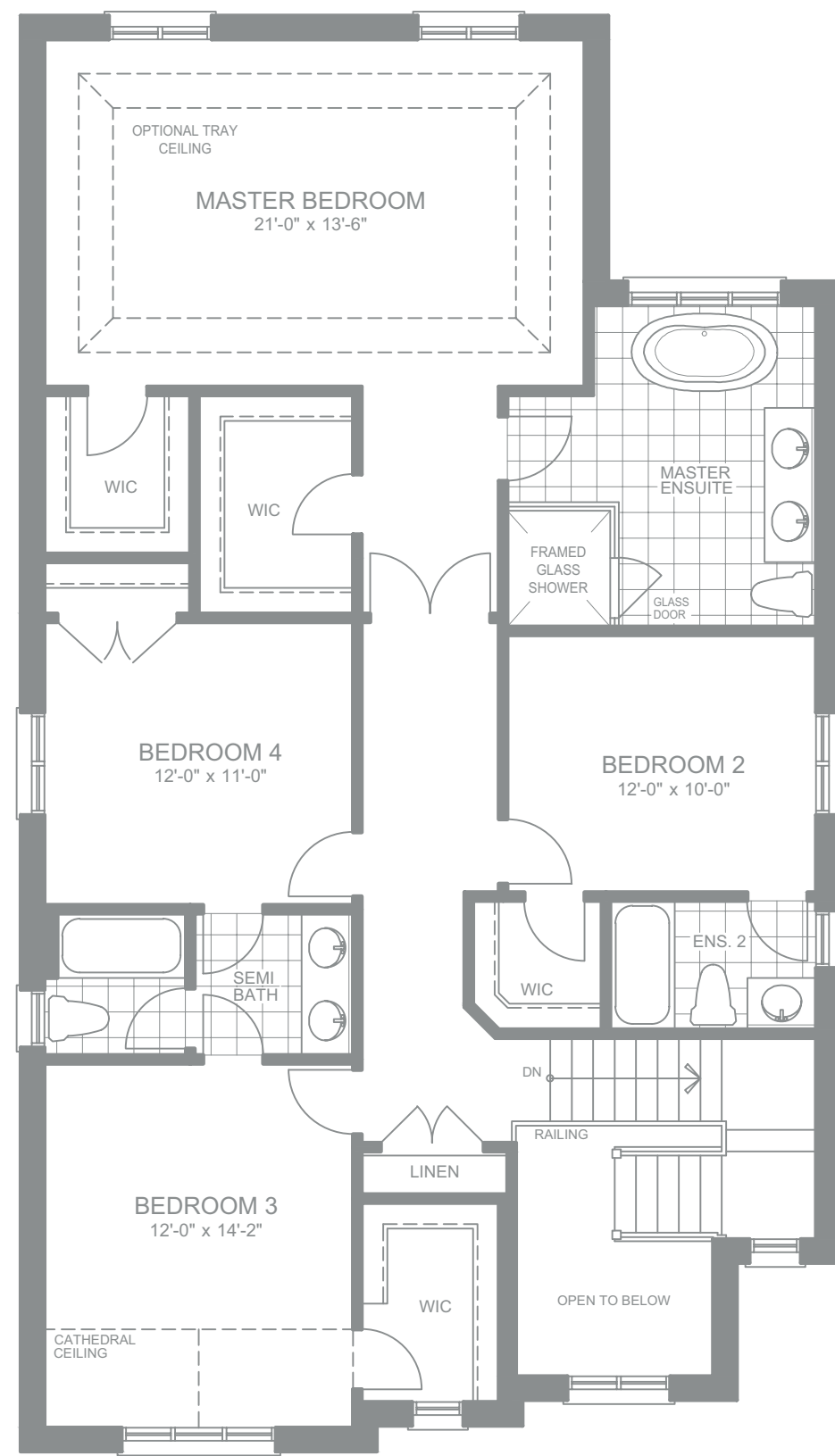
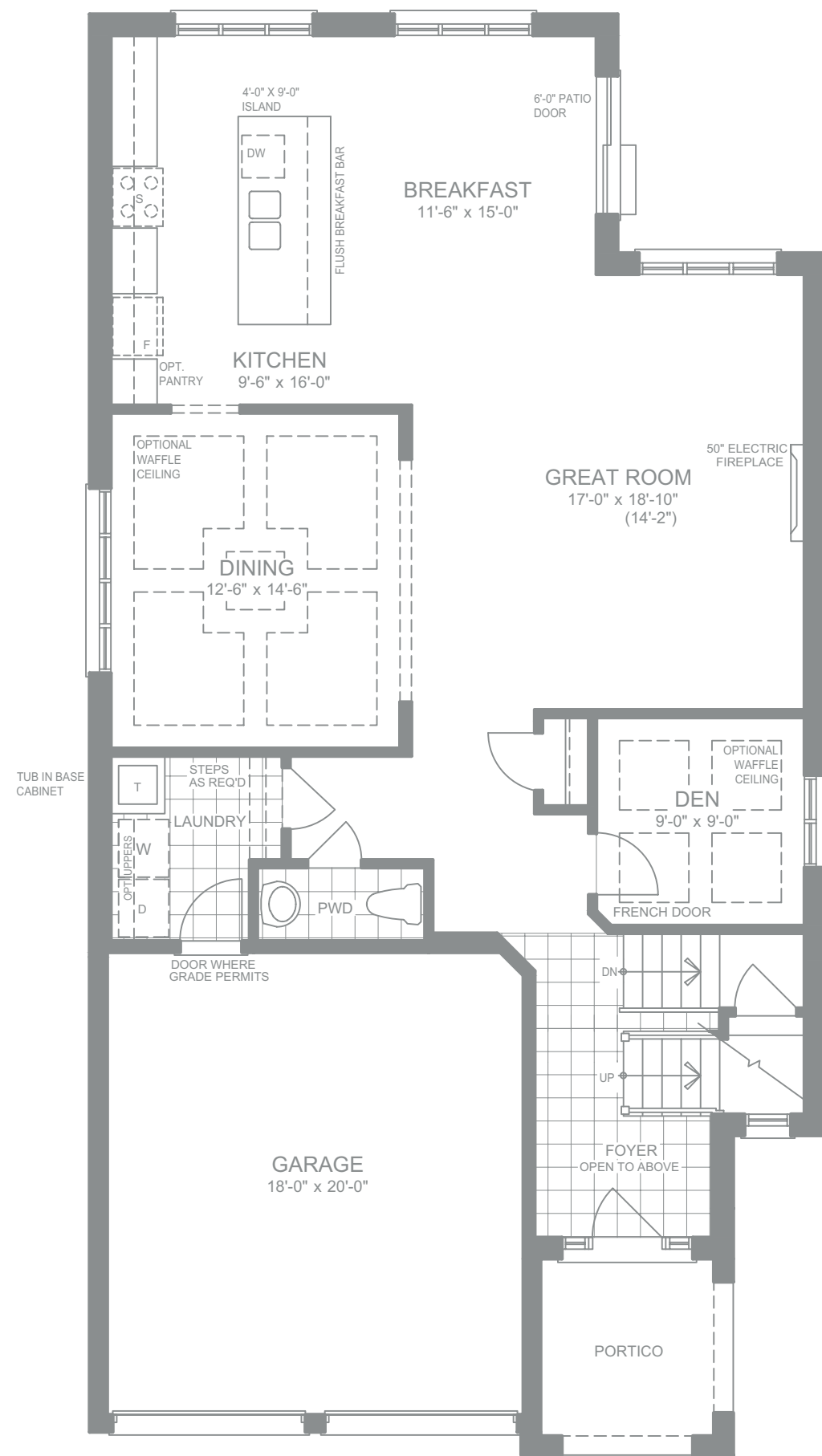
THE  
**LEGENDARY**  
ELEVATION

B



— 3924 SQ. FT. —  
(INCLUDES 1024 SQ. FT. FIN. BSMT)





**LEGENDARY**



**ELEVATION A**  
- 3947 SQ.FT. -  
(INCLUDES 1024 SQ.SF. FIN. BSMT)



**ELEVATION B**  
- 3924 SQ.FT. -  
(INCLUDES 1024 SQ.SF. FIN. BSMT)



THE  
INSPIRING  
ELEVATION

A



— 3919 SQ. FT. —  
(INCLUDES 844 SQ. FT. FIN. BSMT)

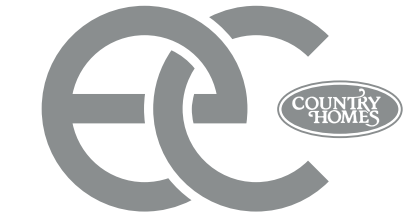
THE  
INSPIRING  
ELEVATION

B



— 3982 SQ. FT. —  
(INCLUDES 844 SQ. FT. FIN. BSMT)





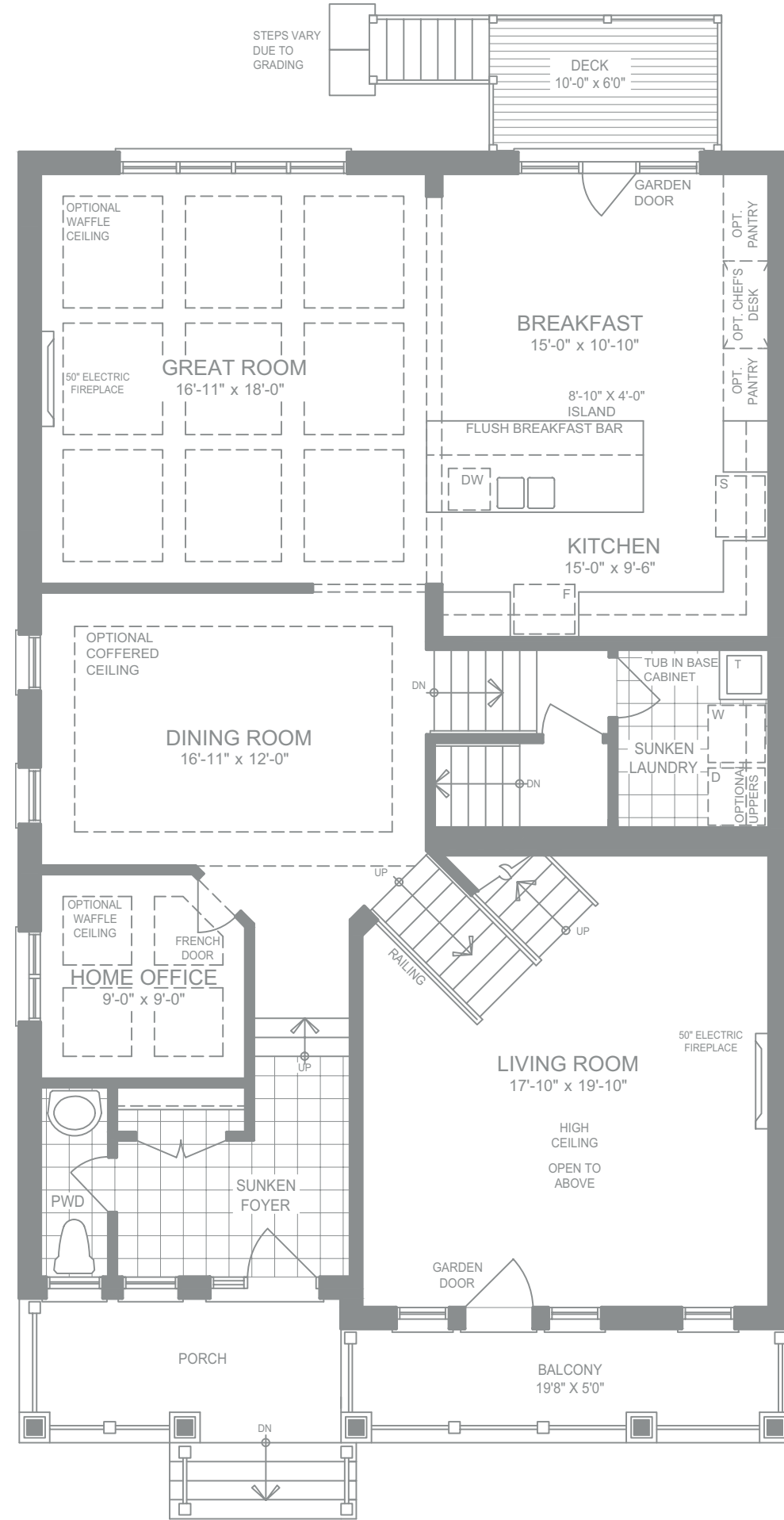
INSPIRING



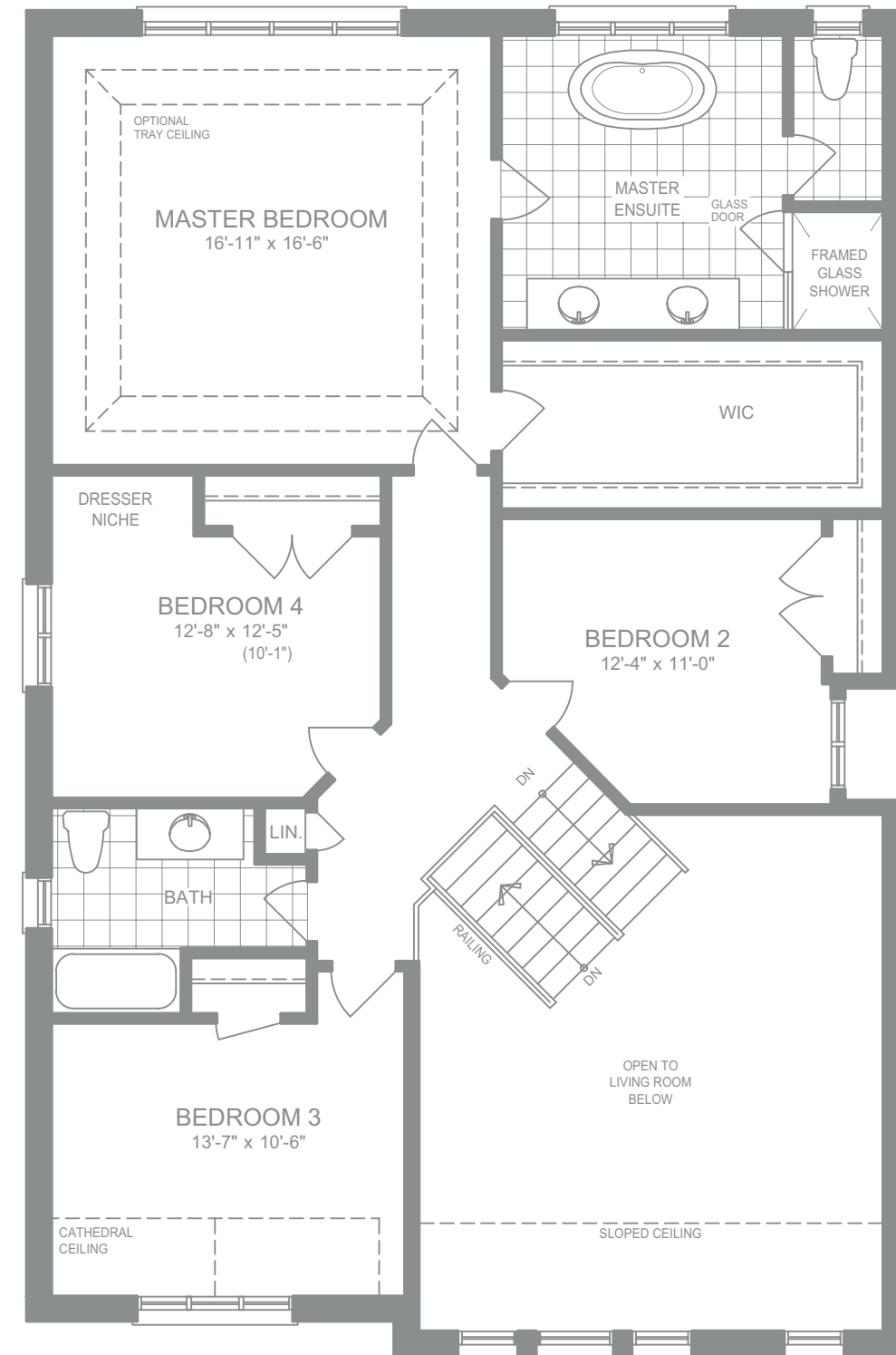
ELEVATION A  
 - 3919 SQ.FT. -  
 (INCLUDES 844 SQ.SF. FIN. BSMT)



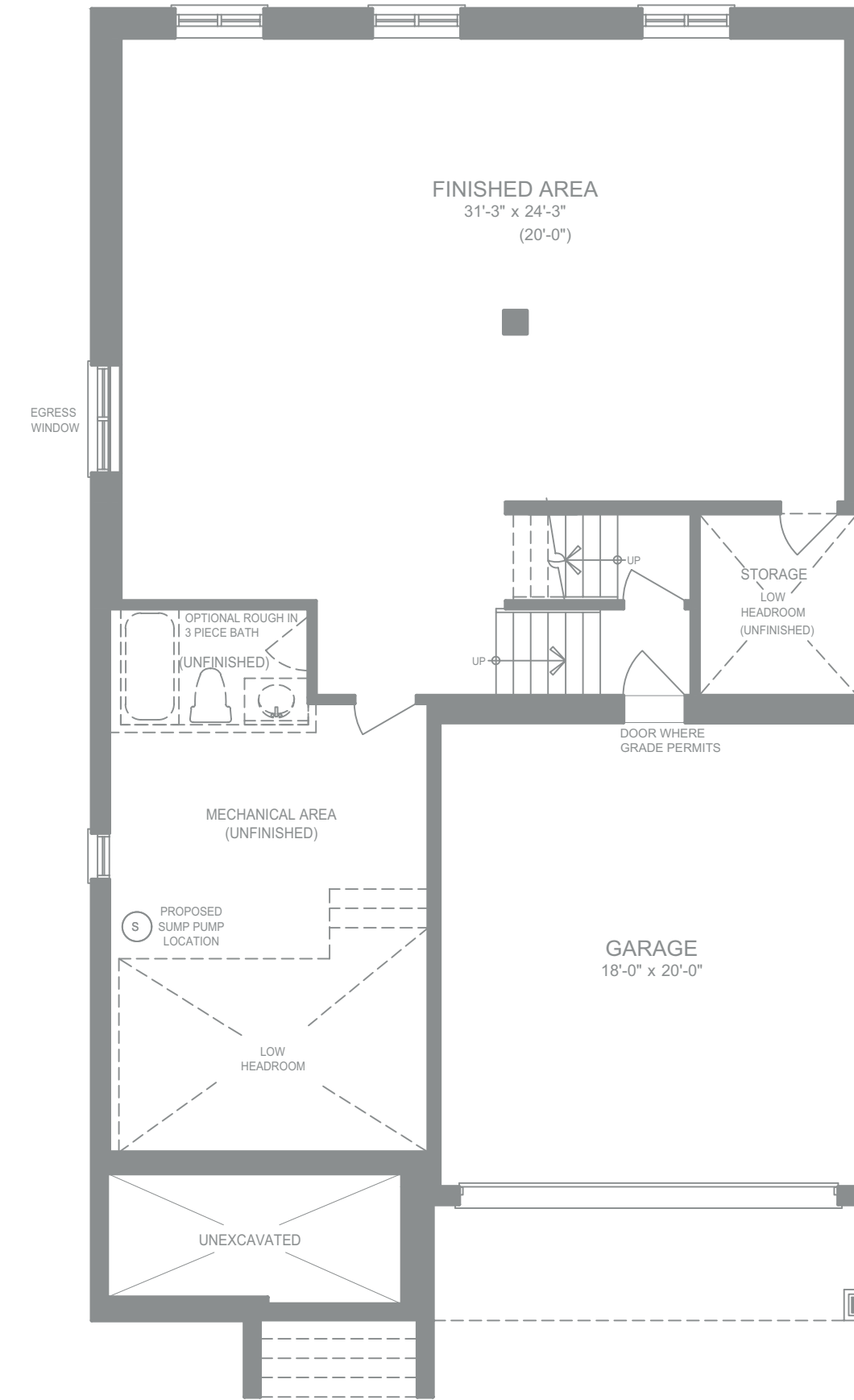
ELEVATION B  
 - 3982 SQ.FT. -  
 (INCLUDES 844 SQ.SF. FIN. BSMT)



MAIN FLOOR PLAN  
 ELEV. - A



SECOND FLOOR PLAN  
 ELEV. - A



FINISHED BASEMENT  
 ELEV. - A



THE  
TIMELESS  
ELEVATION

A



— 4011 SQ. FT. —  
(INCLUDES 767 SQ. FT. FIN. BSMT)

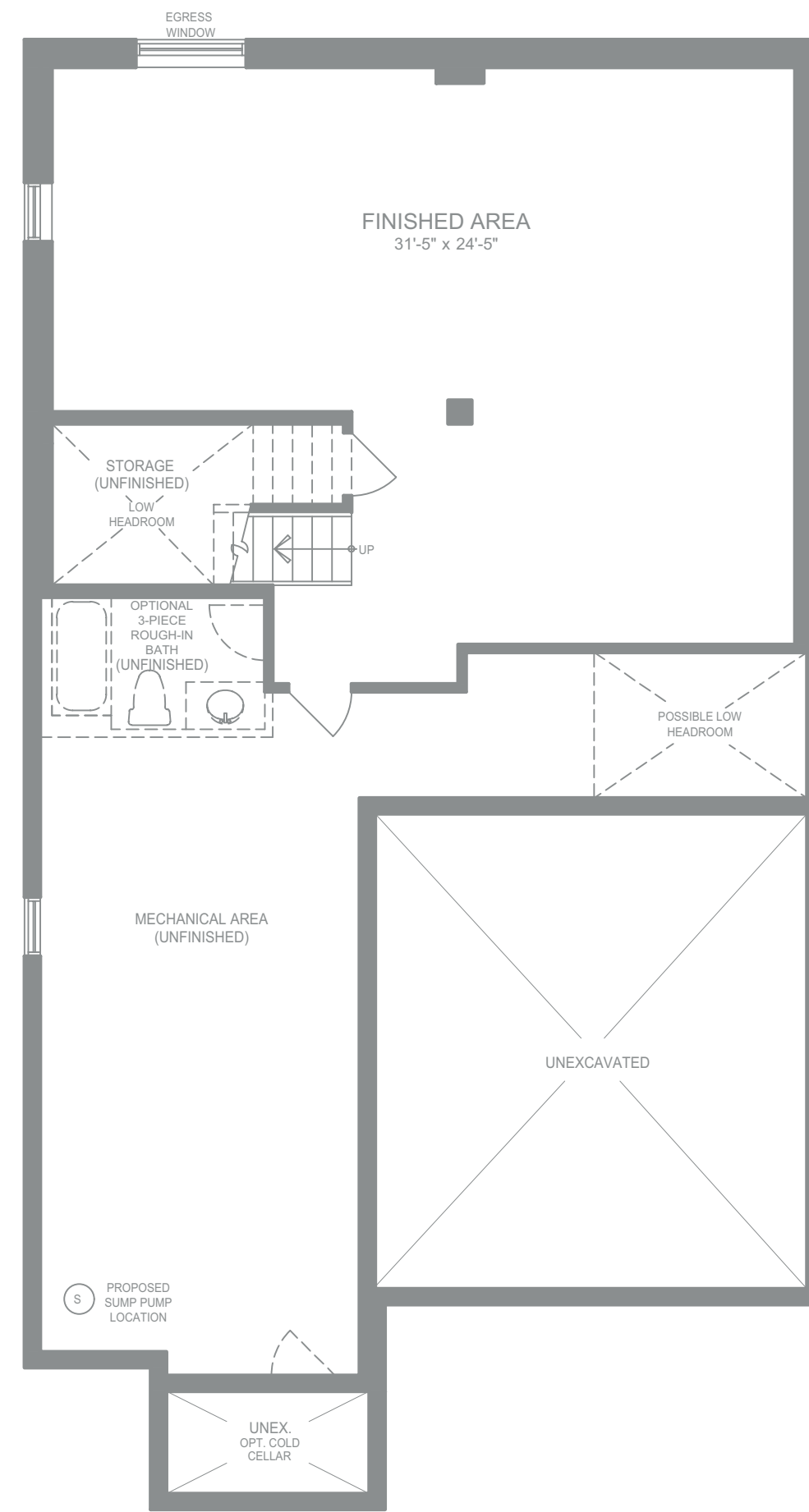
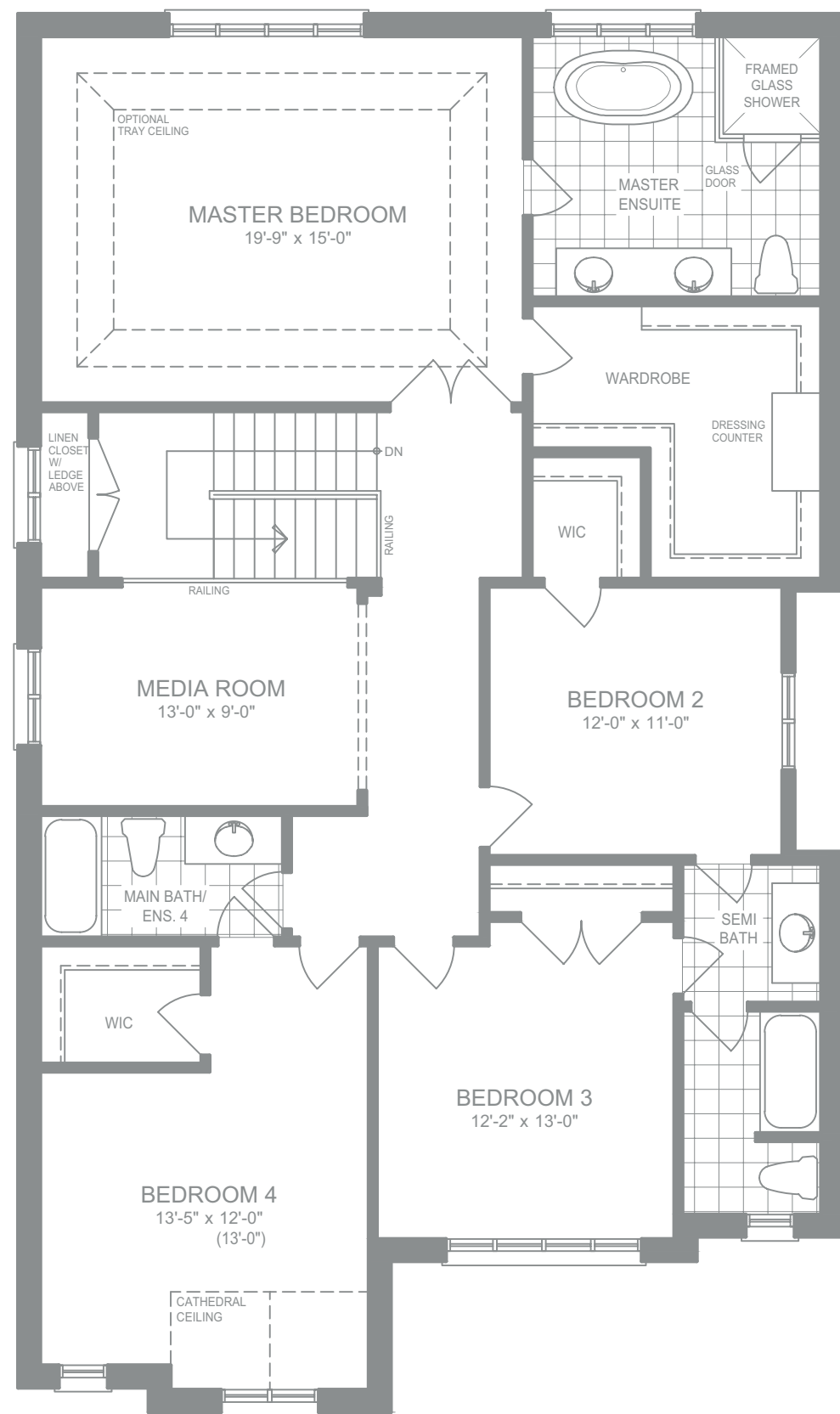
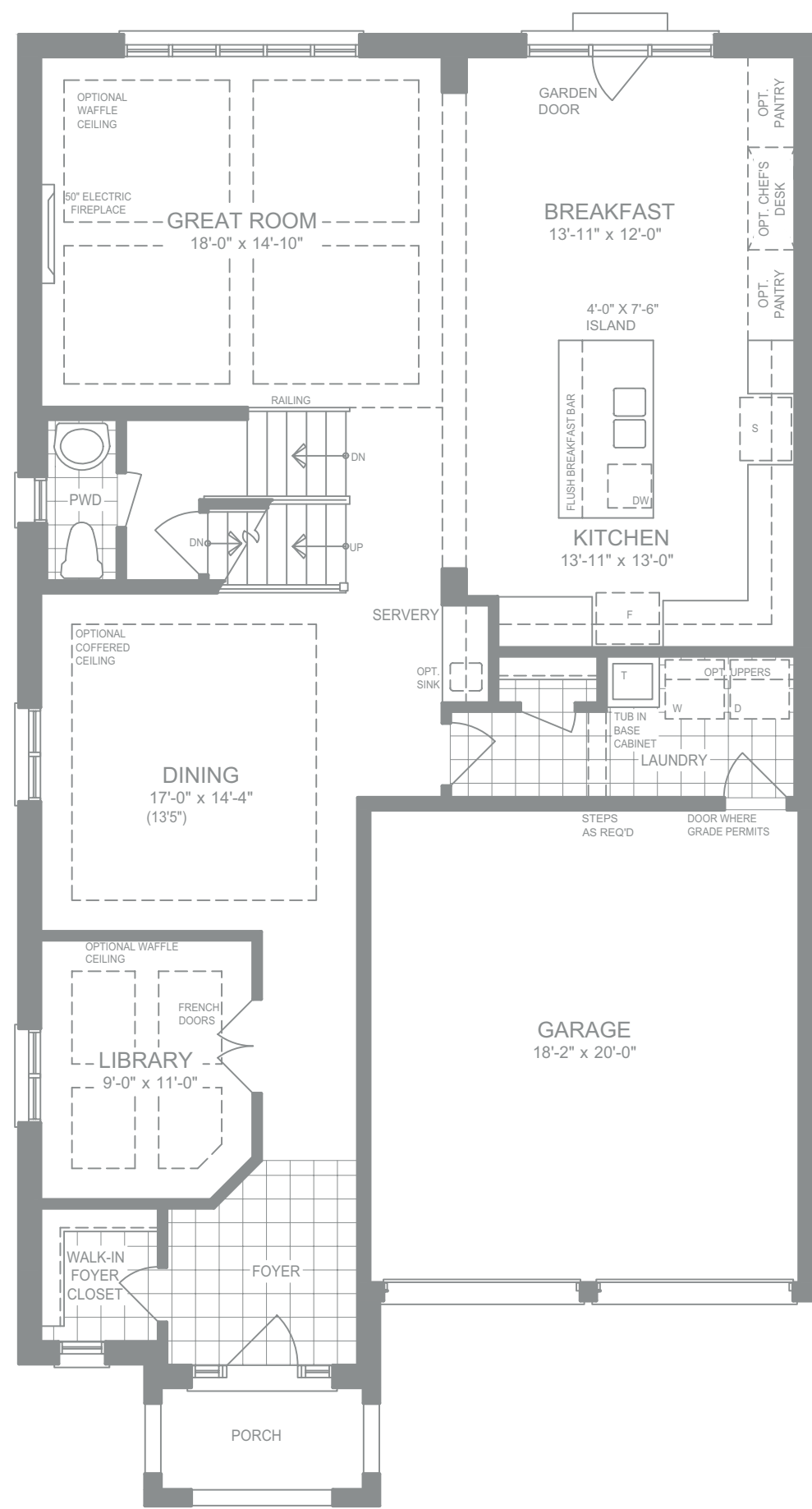
THE  
TIMELESS  
ELEVATION

B



— 4028 SQ. FT. —  
(INCLUDES 767 SQ. FT. FIN. BSMT)





**TIMELESS**



**ELEVATION A**  
- 4011 SQ.FT. -  
(INCLUDES 767 SQ.SF. FIN. BSMT)



**ELEVATION B**  
- 4028 SQ.FT. -  
(INCLUDES 767 SQ.SF. FIN. BSMT)



THE  
EXQUISITE  
ELEVATION

A



- 4 2 3 3 S Q . F T . - 4 7 2 5 S Q . F T . w / L O F T -  
(INCLUDES 946 SQ. FT. FIN. BSMT)

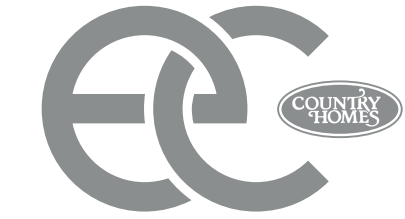
THE  
EXQUISITE  
ELEVATION

B



- 4 2 6 1 S Q . F T . - 4 7 5 3 S Q . F T . w / L O F T -  
(INCLUDES 946 SQ. FT. FIN. BSMT)





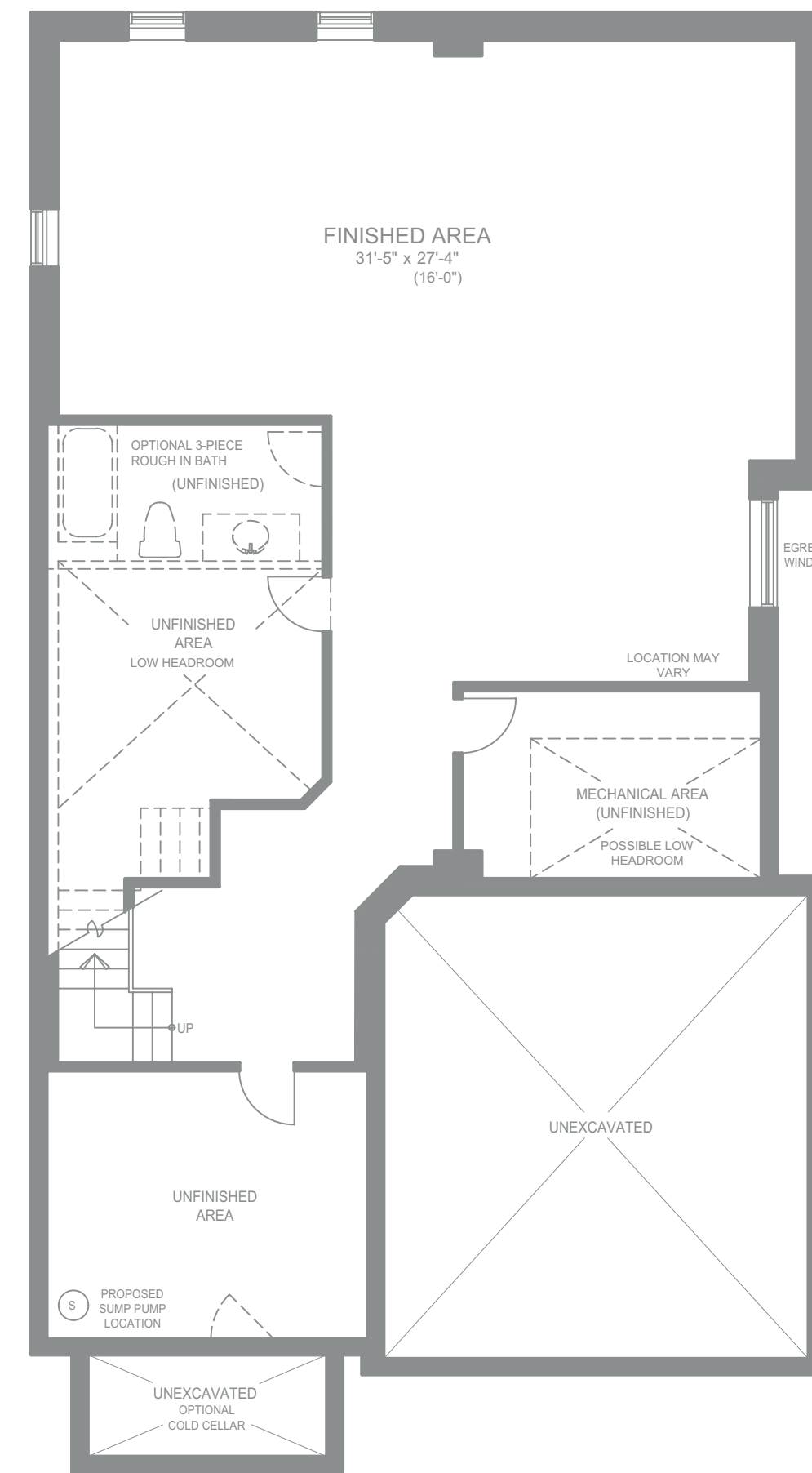
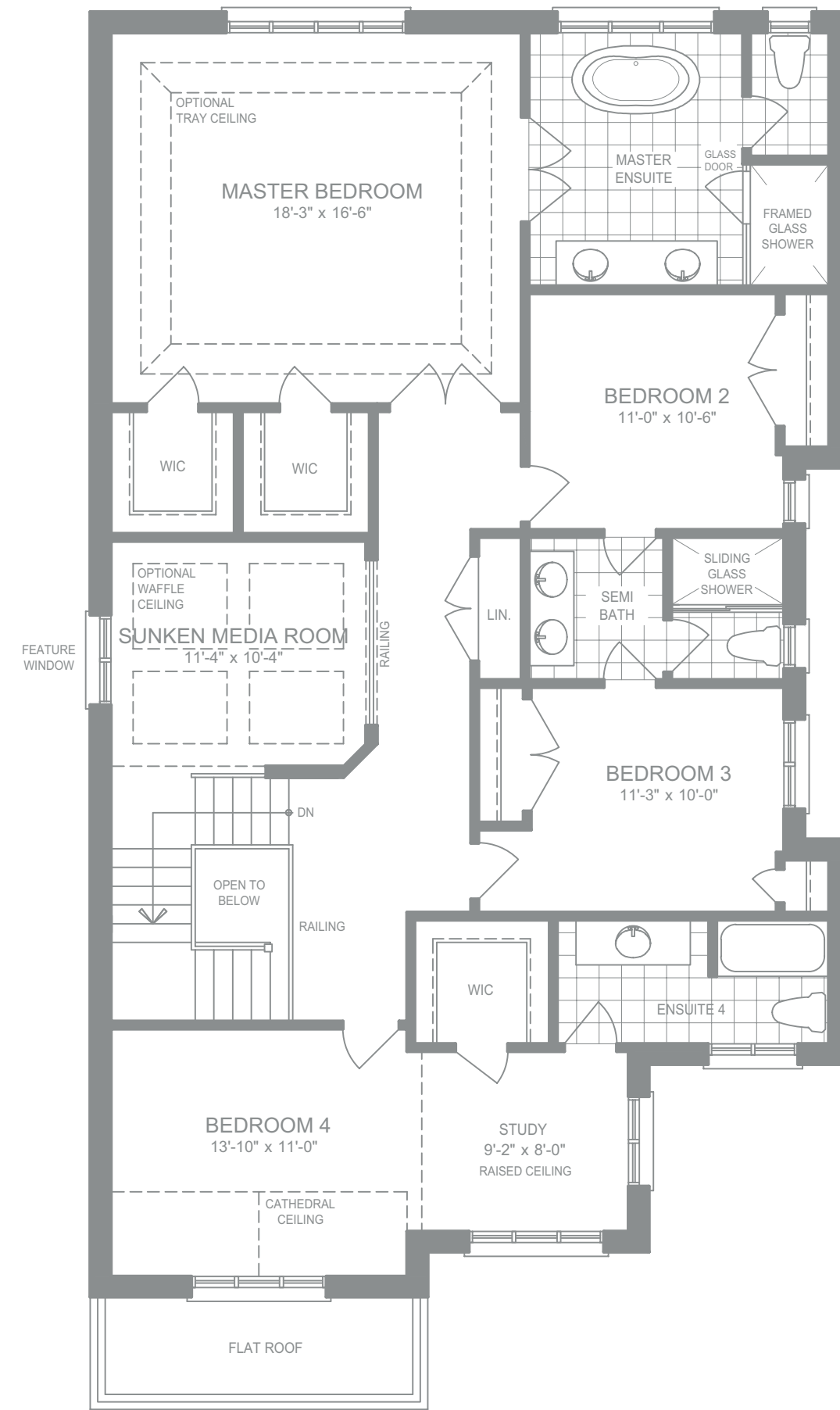
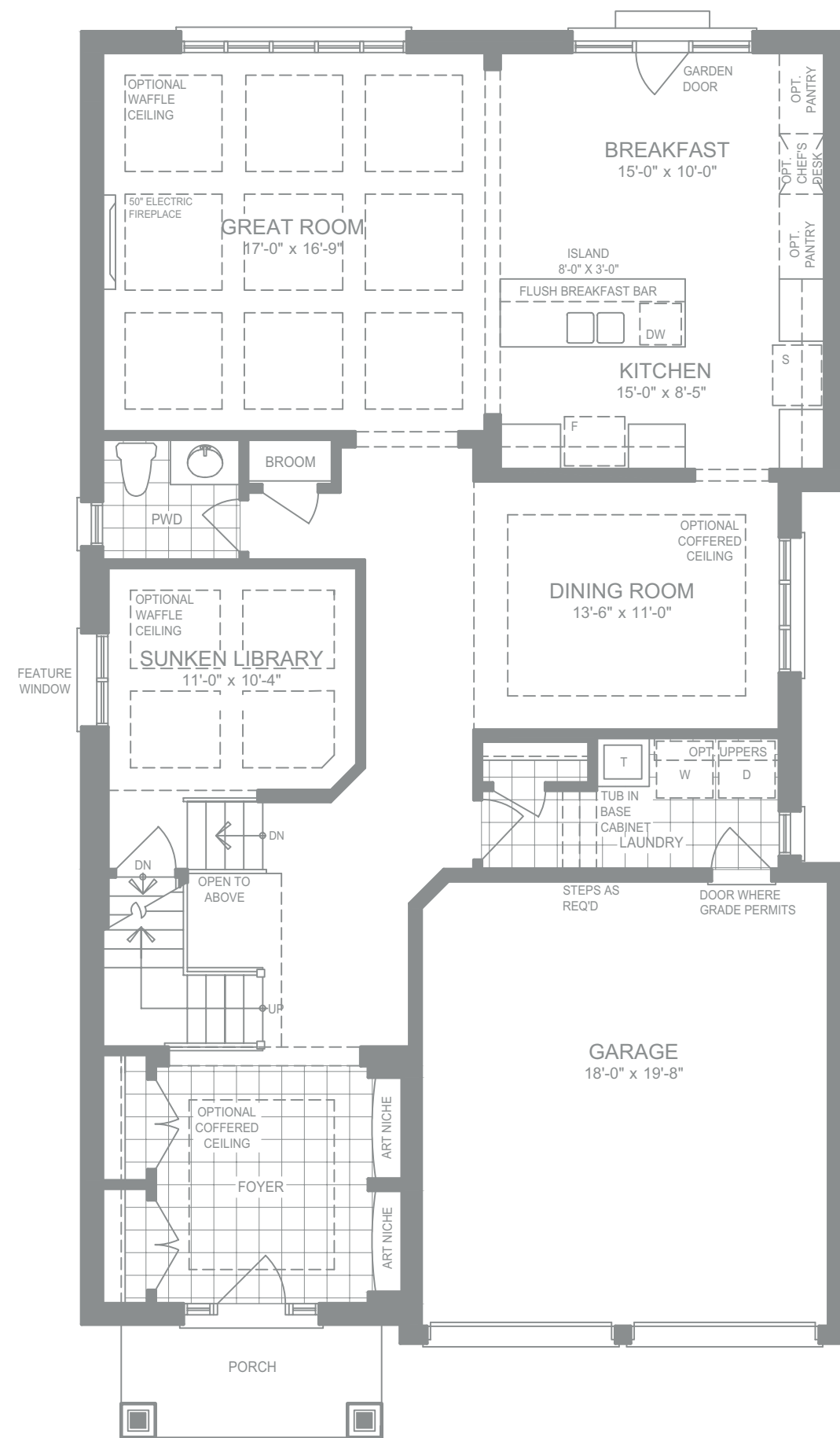
# EXQUISITE



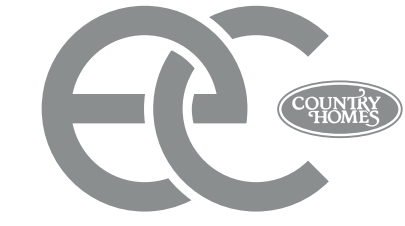
ELEVATION A  
 - 4233 SQ.FT. -  
 (INCLUDES 946 SQ.SF. FIN. BSMT)



ELEVATION B  
 - 4261 SQ.FT. -  
 (INCLUDES 946 SQ.SF. FIN. BSMT)







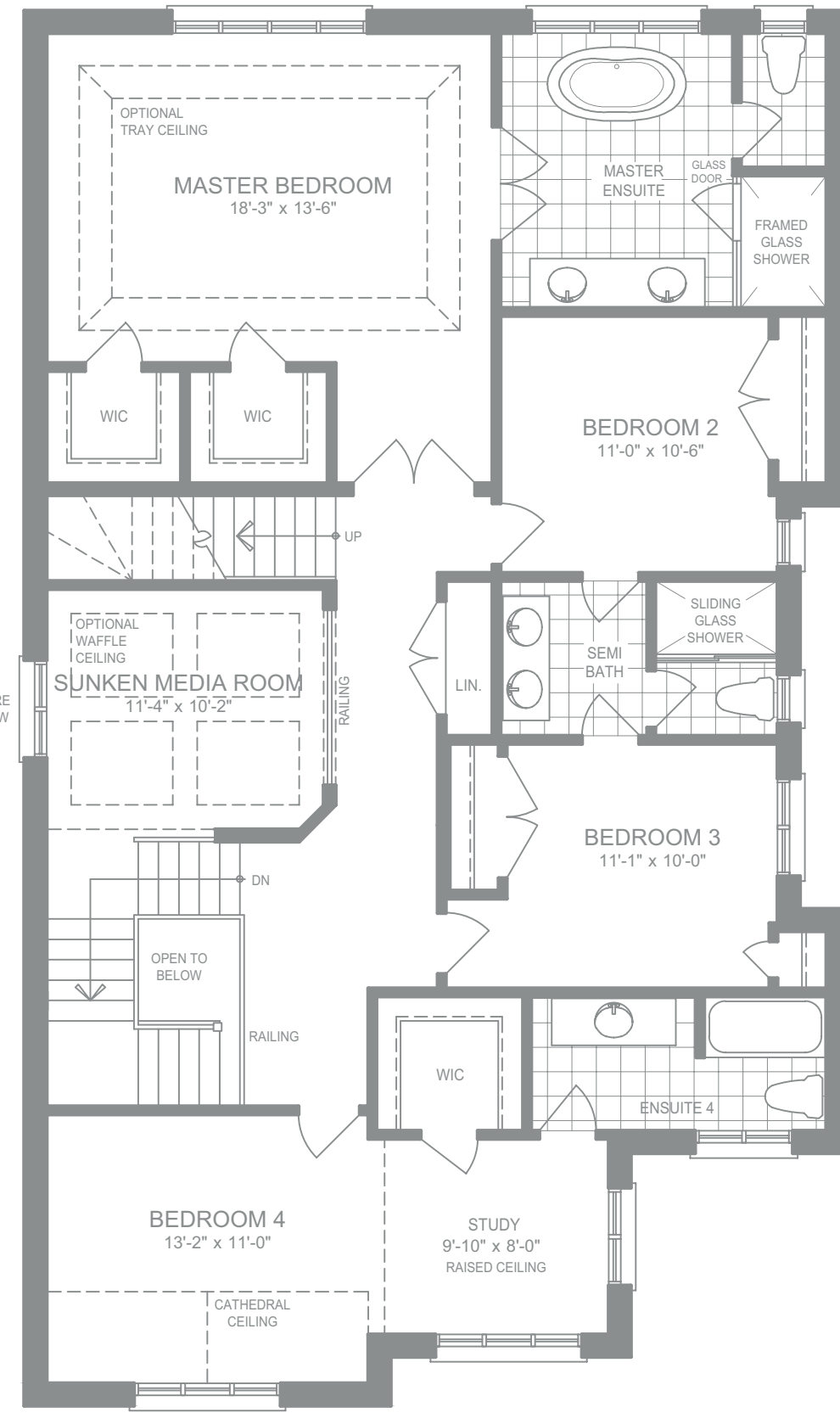
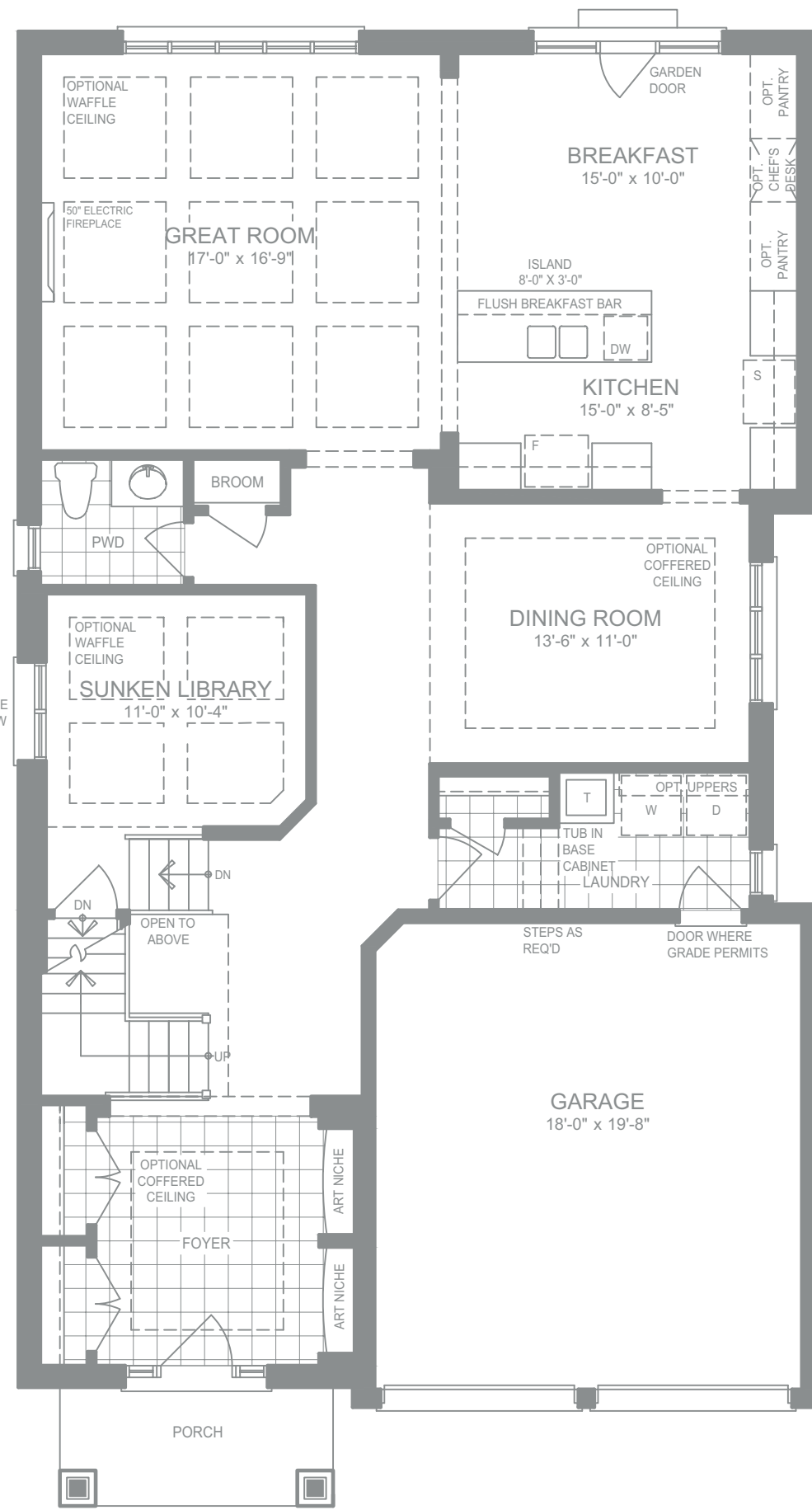
EXQUISITE w/LOFT



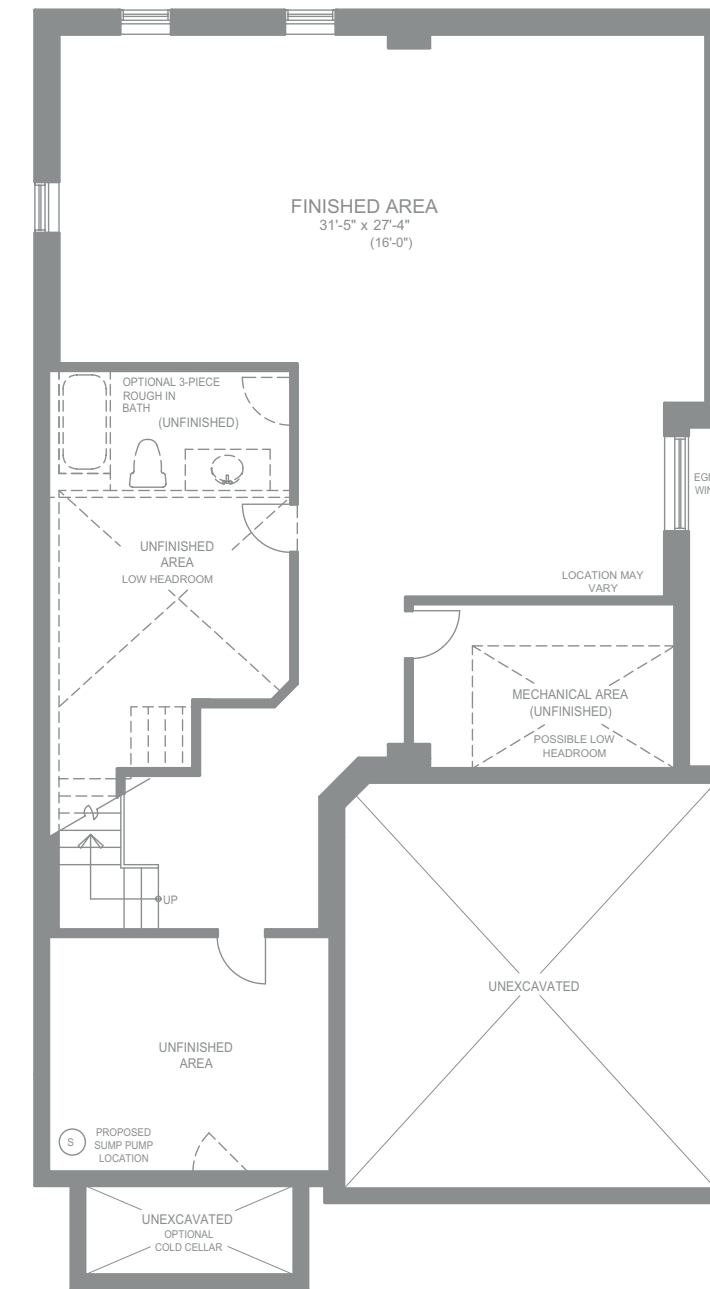
ELEVATION A  
- 4725 SQ.FT. w/LOFT -  
(INCLUDES 946 SQ.SF. FIN. BSMT)



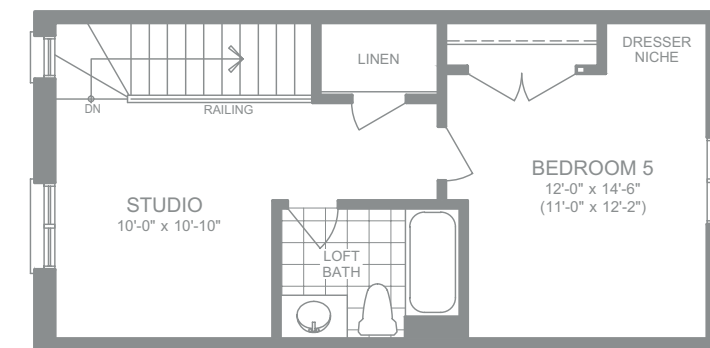
ELEVATION B  
- 4753 SQ.FT. w/LOFT -  
(INCLUDES 946 SQ.SF. FIN. BSMT)



SECOND FLOOR PLAN ELEV. - A



FINISHED BASEMENT ELEV. - A



LOFT FLOOR PLAN ELEV. - A & B









1341 INNISFIL BEACH ROAD, INNISFIL, ON L9S 4B2

[COUNTRYHOMES.CA](http://COUNTRYHOMES.CA)